



CA17-0003: Zoning - Alteration or enlargement of a nonconforming structure

Board of Supervisors Public Hearing
April 25, 2017

Amendment

The reconstruction of an existing electrical transmission line within an existing easement may be undertaken if:

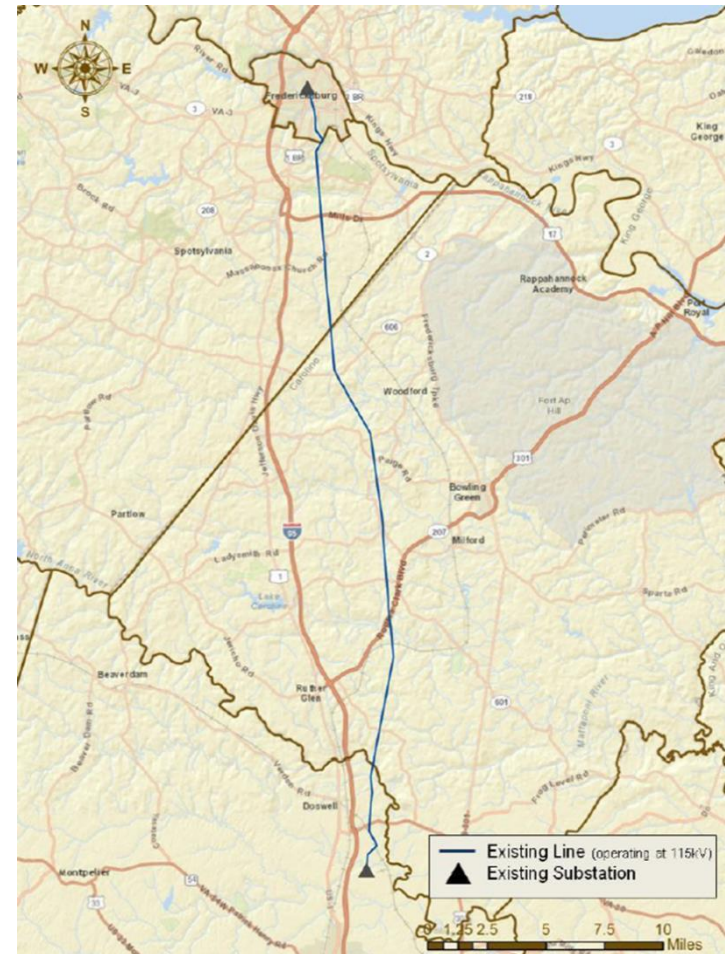
- Done in substantial conformance with the existing transmission line, structures and appurtenances
 - The average height of the new structures in the County may vary from the height of the old structures by plus or minus fifteen percent (15%)
 - The location of the new structures may vary from the existing locations by up to sixty (60) feet and the footprint of the new structures

Recommendation

- Planning Commission public hearing held April 5, 2017
 - recommend approval of CA17-0003 to the Board of Supervisors
- Staff recommends that the Board adopt the attached Ordinance #23-169

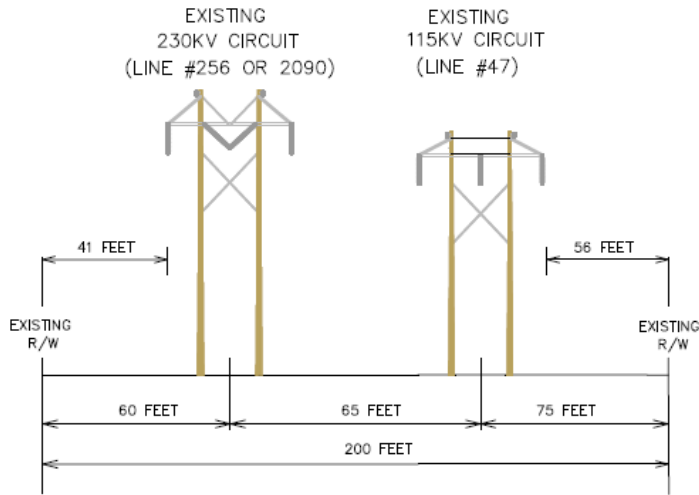
Four Rivers-Fredericksburg Transmission Line Rebuild

- Dominion Virginia Power must rebuild line by 2018 to comply with reliability criteria
- Within existing 200' easement
- Line runs from Hanover County to the City of Fredericksburg ~34 miles
- 8.2 miles in Spotsylvania County, crossing 213 parcels



Current Dominion Project

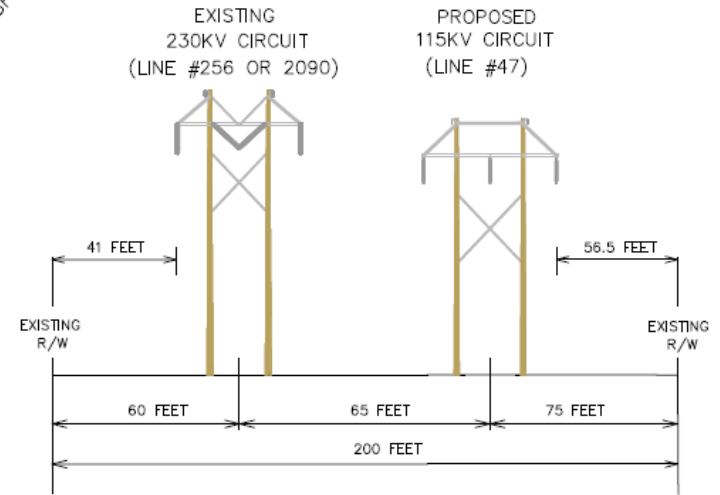
SPOTSYLVANIA



EXISTING CONFIGURATION

TYPICAL RIGHT OF WAY LOOKING TOWARD FREDERICKSBURG SUBSTATION

SPOTSYLVANIA



PROPOSED CONFIGURATION

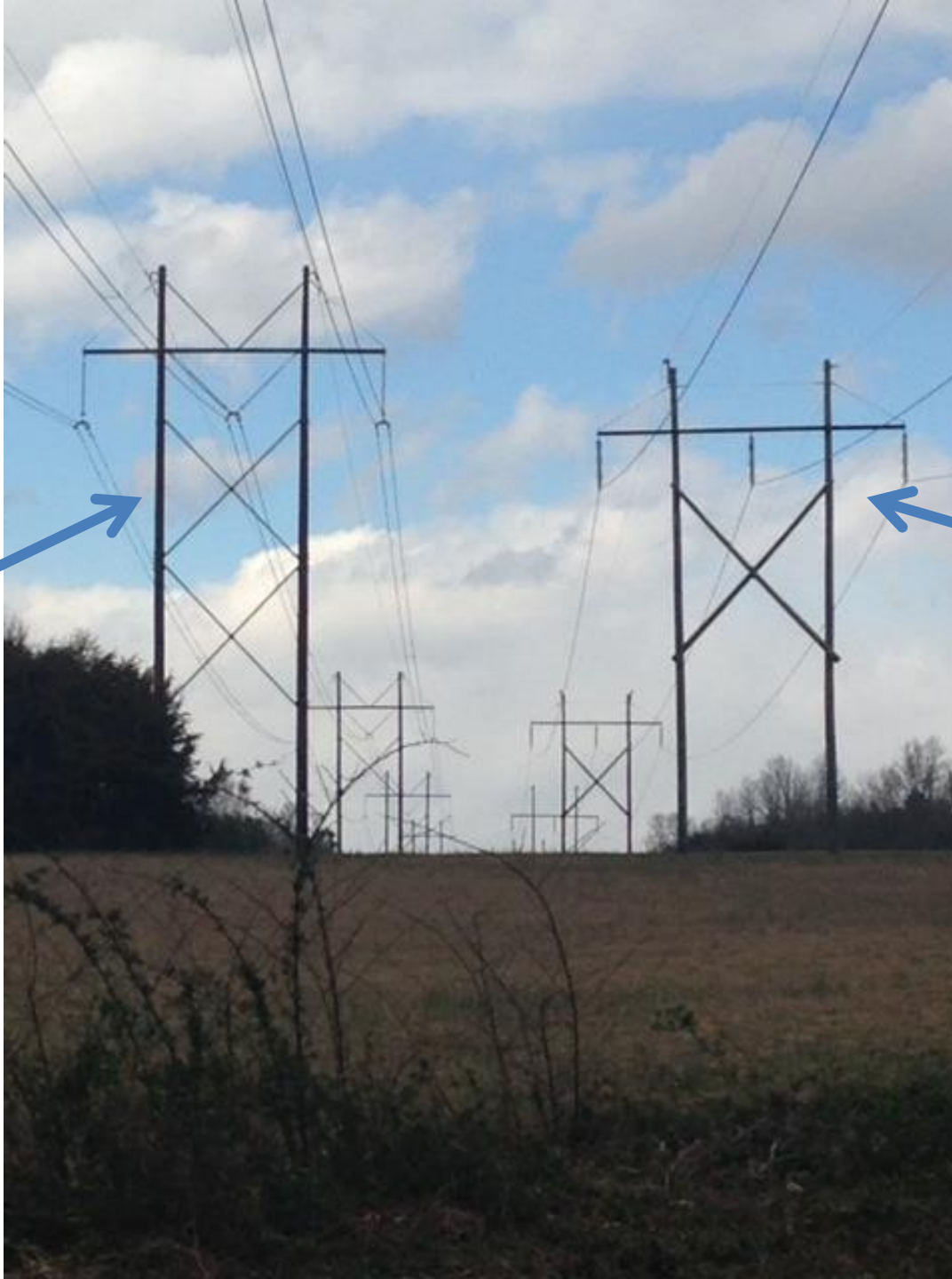
TYPICAL RIGHT OF WAY LOOKING TOWARD FREDERICKSBURG SUBSTATION

TYPE OF STRUCTURE: WOOD H-FRAME
FOUNDATION : DIRECT BURIED
APPROXIMATE AVERAGE HEIGHT: 62 FEET
WIDTH AT CROSSARM: 38 FEET
WIDTH AT BASE: 18 FEET
APPROX. AVERAGE SPAN LENGTH: 630 FEET
CONDUCTOR TYPE: 1-795 ACSR
RIGHT OF WAY WIDTH: 200 FEET
APPROXIMATE LENGTH OF LINE : 8.2 MILES

Average 4'
height increase

TYPE OF STRUCTURE: STEEL H-FRAME
FOUNDATION : DIRECT BURIED
APPROXIMATE AVERAGE HEIGHT: 66 FEET
WIDTH AT CROSSARM: 37 FEET
WIDTH AT BASE: 18 FEET
APPROX. AVERAGE SPAN LENGTH: 630 FEET
CONDUCTOR TYPE: 1-1033.5 ACSR
RIGHT OF WAY WIDTH: 200 FEET
APPROXIMATE LENGTH OF LINE : 8.2 MILES

Metal



Wood



QUESTIONS?