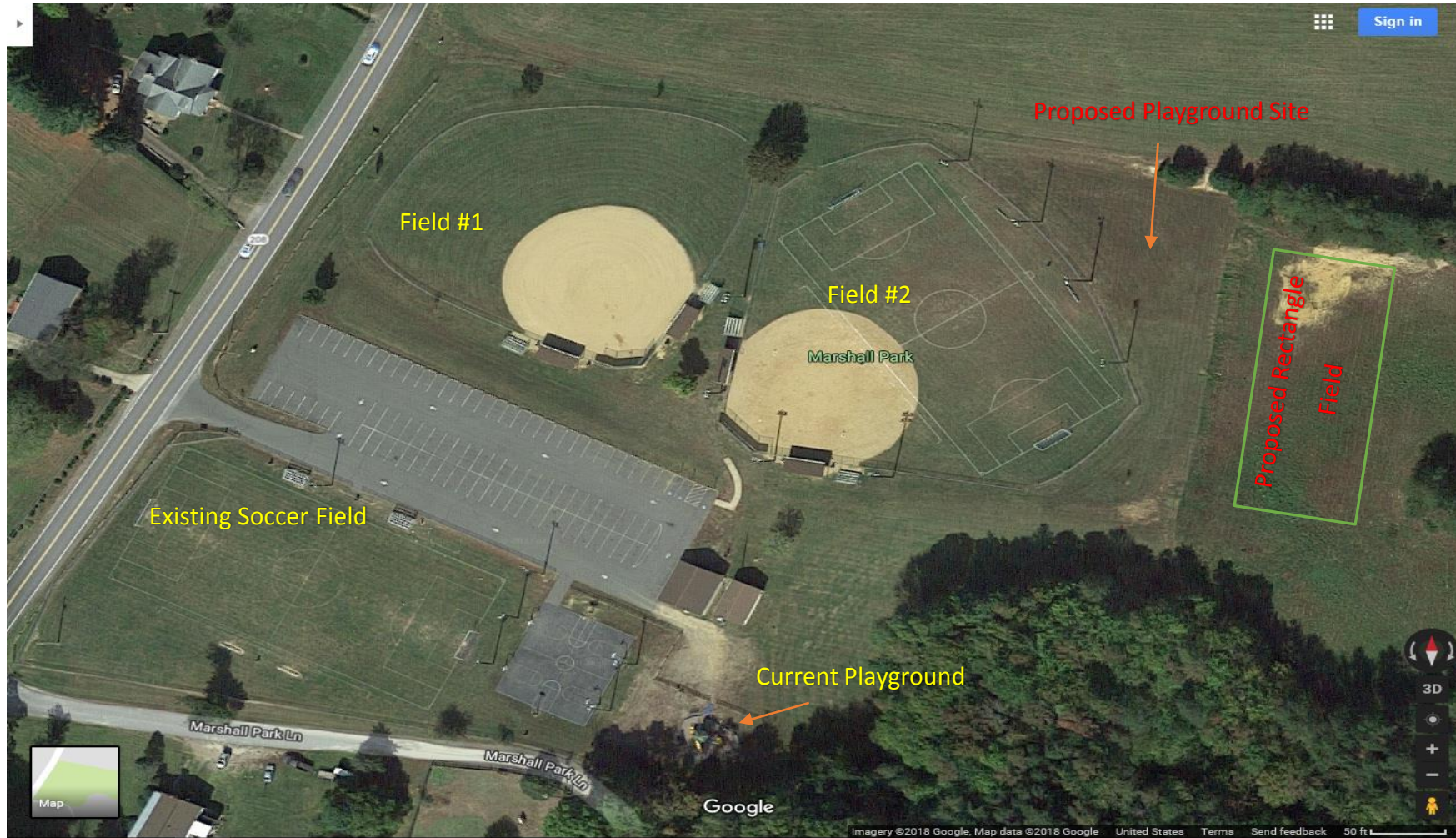
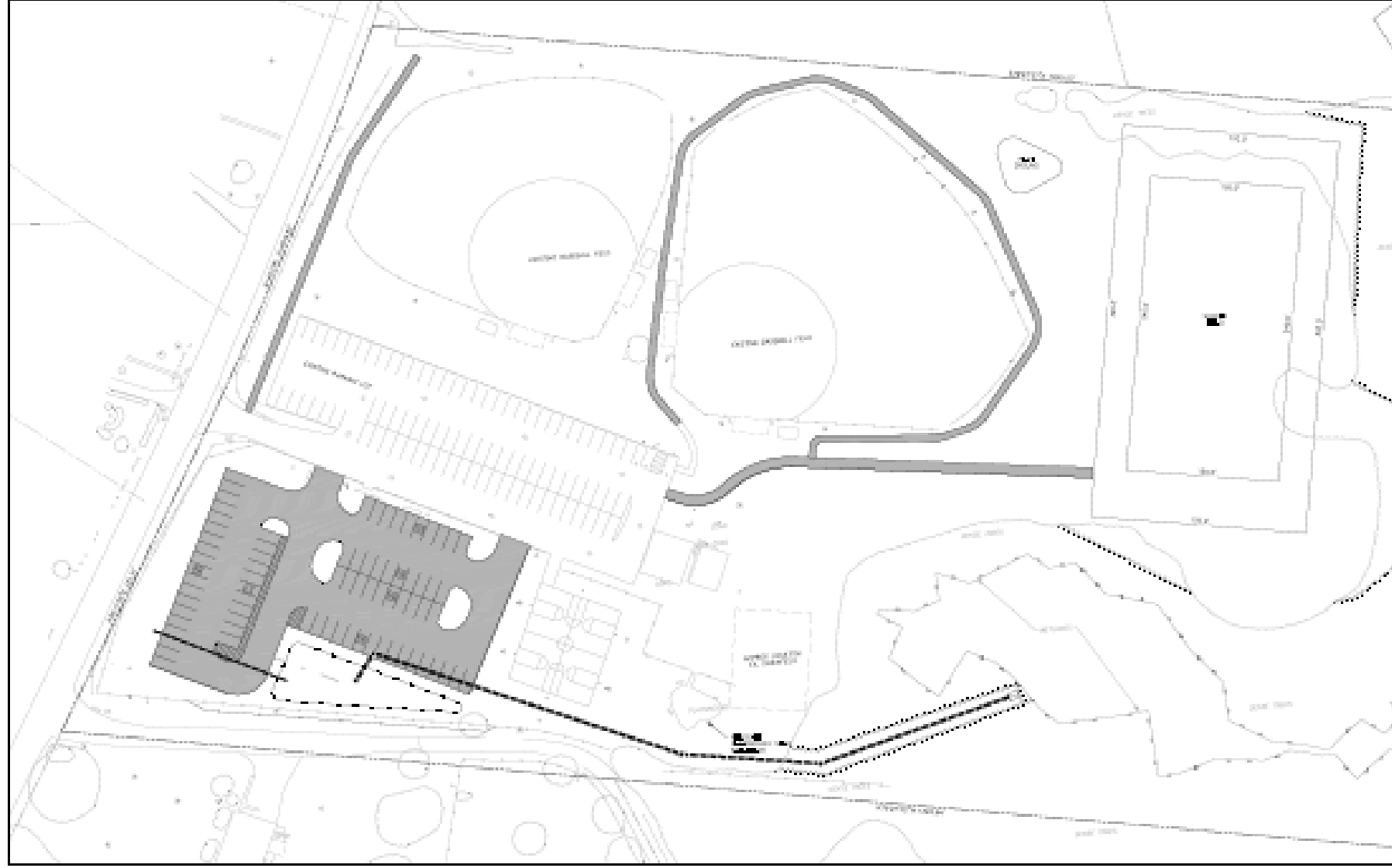


# Marshall Park – Park Renovation

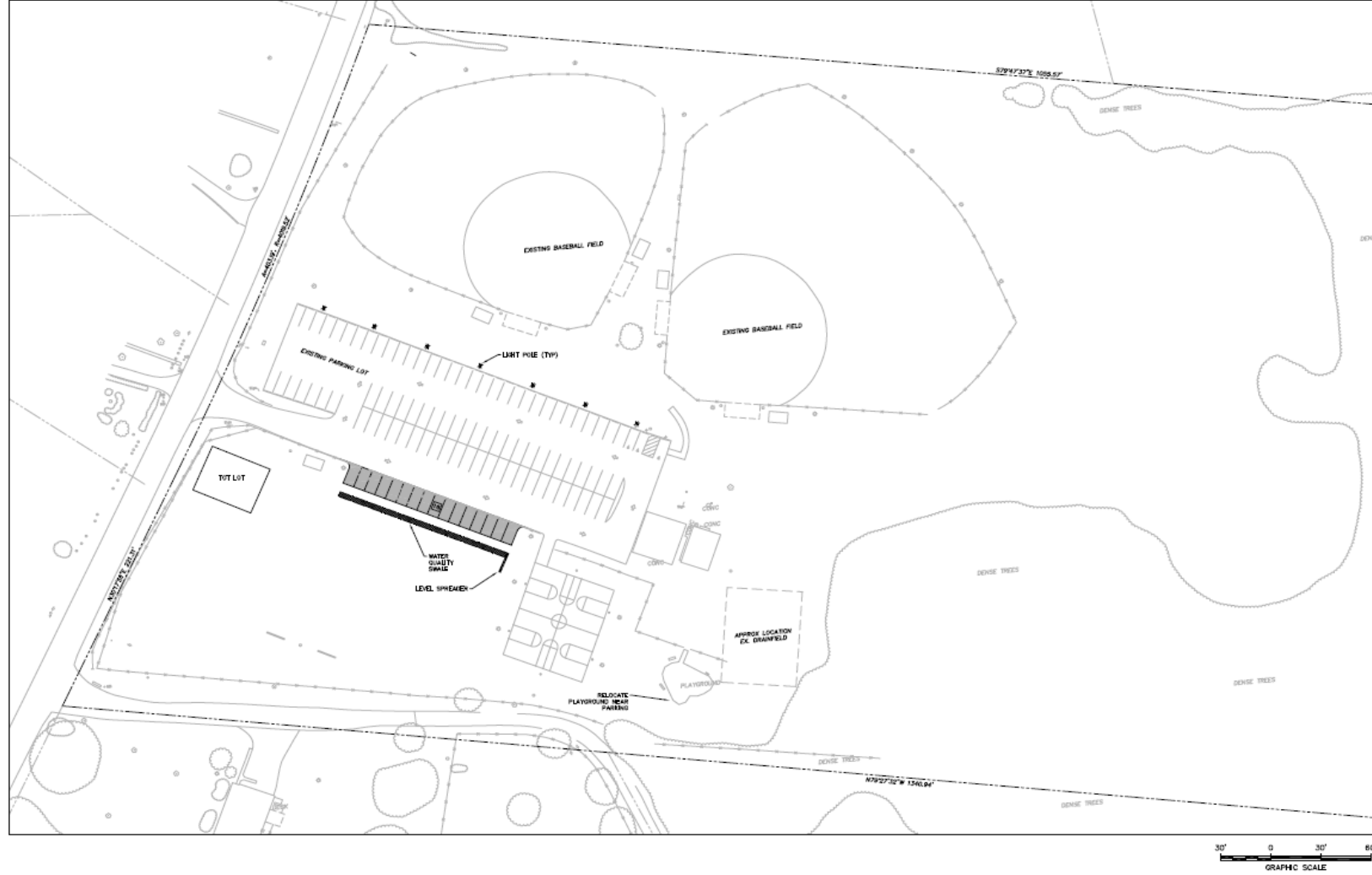




**MARGHALL PARK RECREATIONAL IMPROVEMENTS**  
COUNTY: **DEUEL** DISTRICT:  
SHEET **1** OF **4** COUNTY: **1914**

CONDUCTED BY

[illegible]





# Spotsylvania Middle School Potential Field Construction



# Parks and Recreation Funded Capital Projects Updates

## Keswick Park – Proffer

- Parks and Recreation staff has met with the design engineers for this project to determine some minor design preferences.
  - This project includes the following amenities
    - (3) Rectangular athletic fields with bermuda turf and irrigation.
    - (1) Picnic pavilion
    - (2) Horseshoe pits
    - (1) Restroom facility with storage structure
    - (2) Tennis courts
    - Trails
    - Lighting for tennis courts, restroom facility and related parking areas.
    - Parking for approximately 180 vehicles

