

Spotsylvania County Board of Supervisors

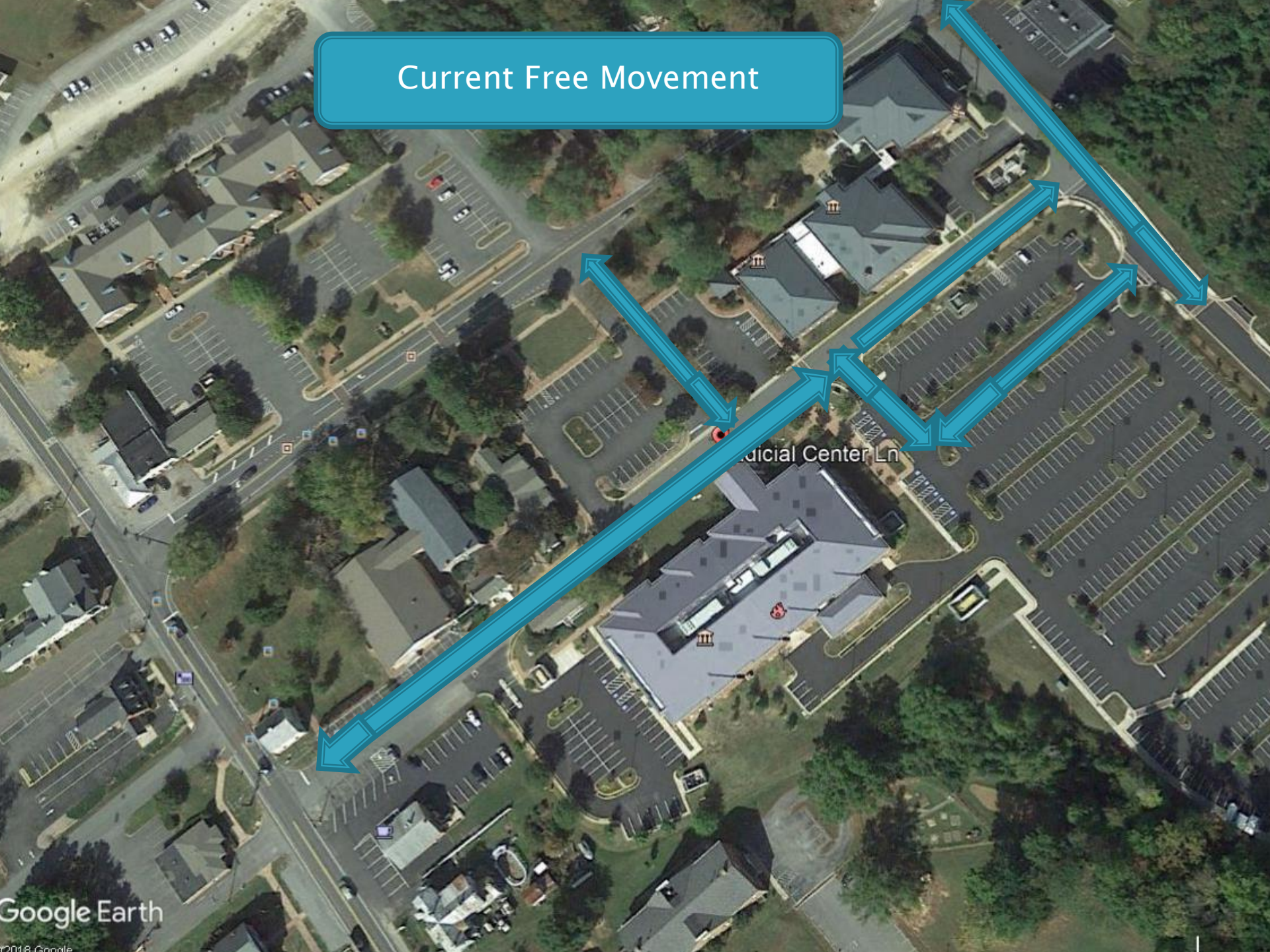
June 12, 2018

Judicial Center Lane

Discontinuance

- Restricting access on Judicial Center Lane was recommended by the Department of Justice from a Courthouse Safety Assessment for the Courthouse renovation project.
- Judicial Center Lane will remain open; will not close; no service interruption to County Offices.
- Judicial Center Lane will have free movement from Courthouse Road to Dean Riding through the parking lot; free movement through the front access across from the Holbert Building; and free movement to Courthouse Road by Courthouse Café.

Current Free Movement

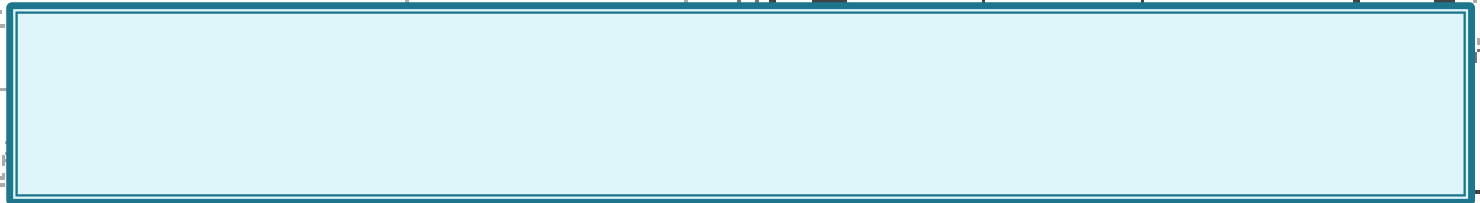


Restricted Access Location.
Approximately 275 feet of
Judicial Center Lane will be
removed from VDOT
maintenance.

Judicial Center Ln

An aerial photograph of a residential area with a grid of streets. A blue callout box with a white border is positioned in the upper-middle section of the image. A large blue arrow points downwards from the bottom of this box to a light blue rectangular area on the street below. The light blue area is oriented horizontally and spans a significant portion of the street width. The surrounding area includes various buildings, parking lots, and green spaces.

Approximately 275 feet of area being
removed from VDOT maintenance



An aerial photograph of a street intersection. A horizontal road runs across the middle, and a vertical road runs down the center. A yellow callout box is at the top, and a blue callout box is on the left. Blue arrows indicate traffic flow: one pointing up-right from the intersection, one pointing down-left, one pointing down-right, and one pointing up-left. A yellow arrow points down-right from the top-right towards the intersection. The text 'Judicial Center Ln' is visible on the horizontal road.

Restricted Movement
for Safety

Free Movement In Both Directions

Transportation Committee

- ▶ Meeting May 10, 2018
 - Discontinue of maintenance.
 - Recommended Approval

Conclusion

- ▶ Judicial Center Lane restricted movement behind the existing Courthouse area ONLY. Full movement will continue with no changes to any other area.
- ▶ Recommended for Safety.
- ▶ All services, businesses and building operations will be uninterrupted.
- ▶ If not approved a variance may be needed to meet setback requirements.