



Materials:

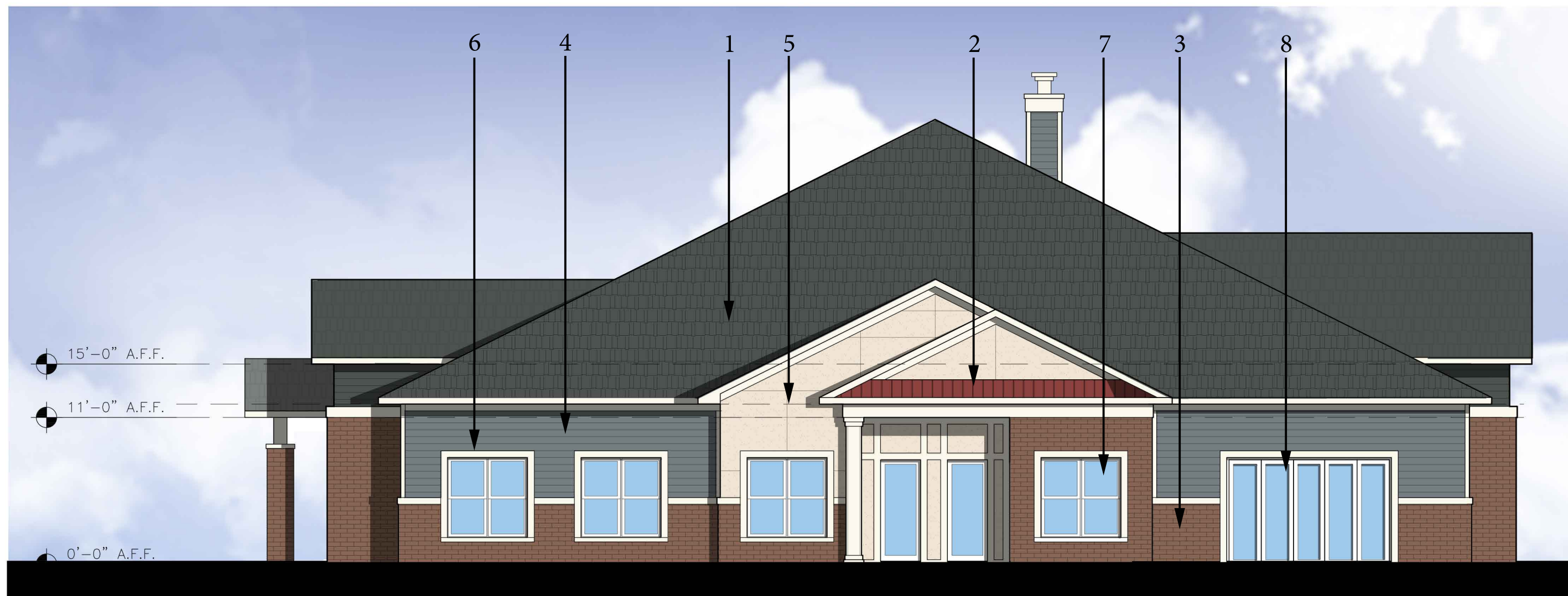
- | | |
|--------------------------------------|---------------------------------------|
| 1. Architectural Fiberglass Shingles | 5. Cementitious Panel Siding |
| 2. Standing Seam Metal Roof Accent | 6. Cementitious Trim |
| 3. Modular Brick Veneer | 7. Architectural Vinyl Window Systems |
| 4. Cementitious Lap Siding | |

PALMERS CREEK APARTMENTS

BUILDING 2 ELEVATION @ 1/16" = 1'-0"

U.S. HIGHWAY 1 SPOTSYLVANIA COUNTY, VA

NOVEMBER 2, 2016



Materials:

- | | |
|--------------------------------------|---------------------------------------|
| 1. Architectural Fiberglass Shingles | 5. Cementitious Panel Siding |
| 2. Standing Seam Metal Roof Accent | 6. Cementitious Trim |
| 3. Modular Brick Veneer | 7. Architectural Vinyl Window Systems |
| 4. Cementitious Lap Siding | 8. Aluminum Storefront (White) |

PALMERS CREEK APARTMENTS

CLUBHOUSE ELEVATION @ 1/8" = 1'-0"

U.S. HIGHWAY 1 SPOTSYLVANIA COUNTY, VA

NOVEMBER 2, 2016