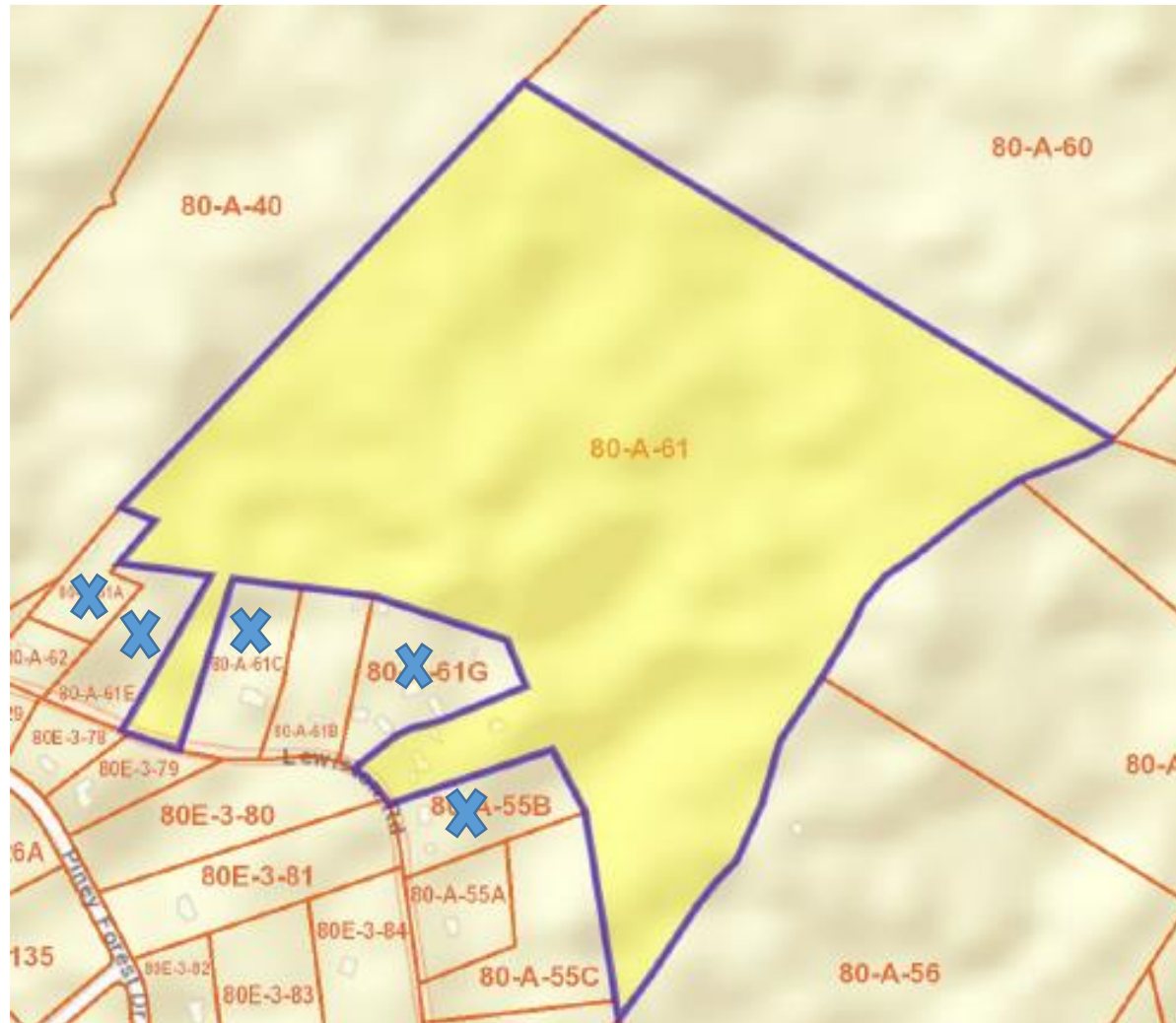


X18-0002: Viola G Blount Estate (Berkeley District)

Spotsylvania County Planning Commission

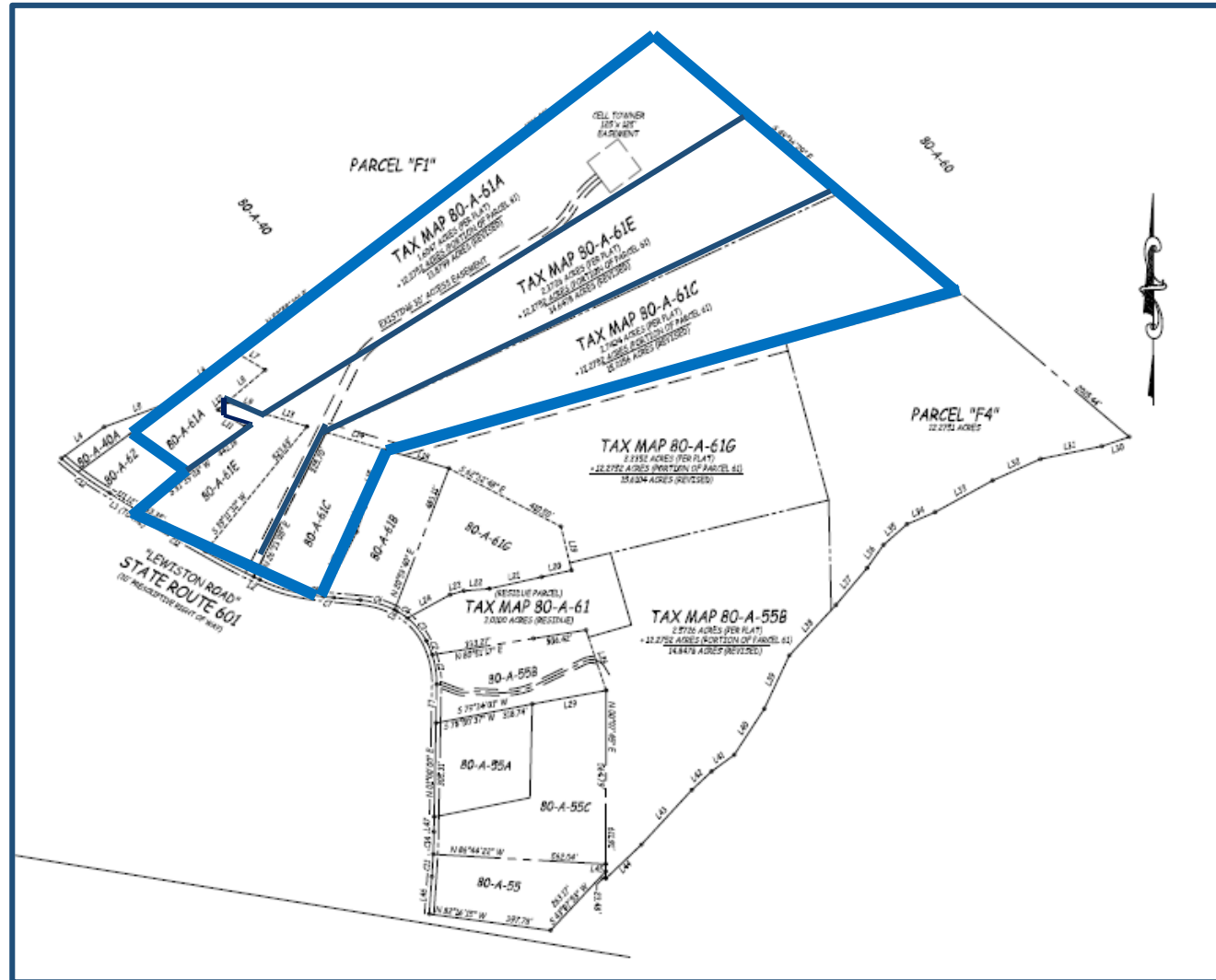
December 5, 2018

Request for Exception to 5:1 Lot Width to Length Ratio



✘ Parcels owned
by 5 of 6 heirs
of equal
portions of TM
80-A-61

Request for Exception to 5:1 Lot Width to Length Ratio



Recommendation

- The will provides for equal shares of TM 80-A-61 to 6 people.
- 5 of the 6 own parcels adjacent to the property.
- 3 of the 6 heirs can receive their land without needing an exception to the Subdivision Ordinance.
- Due to the size and configuration of the heirs' lots and the willed parcel, there is no way to adjust 3 of the lots without exceeding the 5:1 lot to width ratio.
- Staff recommends approval of the lot line adjustments for TM 80-A-61A, 80-A-61E, and 80-A-61C as proposed.