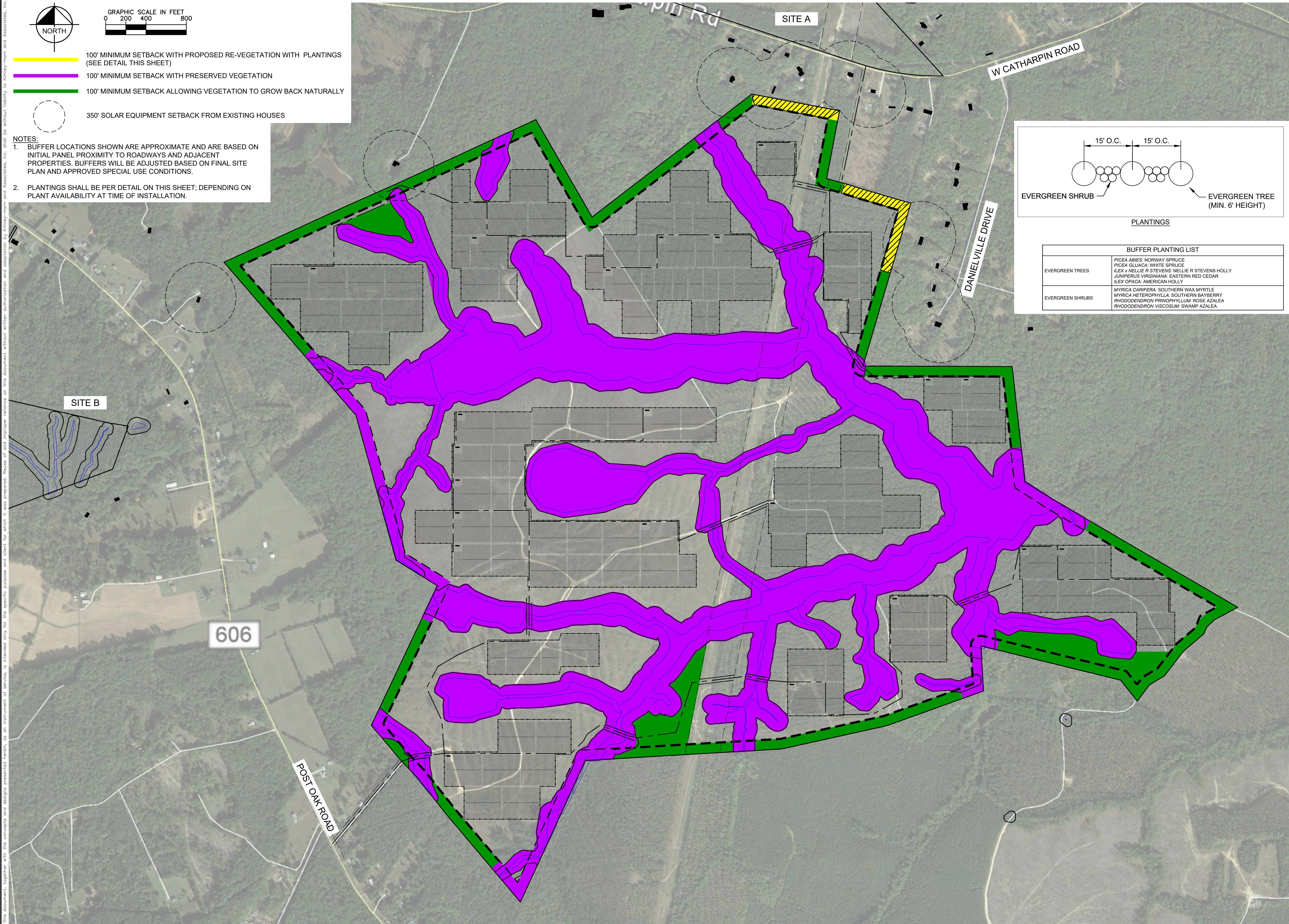


This document, together with the concepts and designs presented herein, as an instrument of service, is intended only for the specific purpose and client for which it was prepared. Reuse of and improper reliance on this document without written authorization and adaptation by Kimley-Horn and Associates, Inc. shall be without liability to Kimley-Horn and Associates, Inc.



- NOTES:**
1. BUFFER LOCATIONS SHOWN ARE APPROXIMATE AND ARE BASED ON INITIAL PANEL PROXIMITY TO ROADWAYS AND ADJACENT PROPERTIES. BUFFERS WILL BE ADJUSTED BASED ON FINAL SITE PLAN AND APPROVED SPECIAL USE CONDITIONS.
  2. PLANTINGS SHALL BE PER DETAIL ON THIS SHEET; DEPENDING ON PLANT AVAILABILITY AT TIME OF INSTALLATION.

15' O.C.

15' O.C.

EVERGREEN SHRUB

EVERGREEN TREE (MIN. 6' HEIGHT)

PLANTINGS

BUFFER PLANTING LIST	
EVERGREEN TREES	PICEA ABIES: NORWAY SPRUCE PICEA GLAUCA: WHITE SPRUCE ILEX x NELLIE R STEVENS: NELLIE R STEVENS HOLLY JUNIPERUS VIRGINIANA: EASTERN RED CEDAR ILEX OPACA: AMERICAN HOLLY
EVERGREEN SHRUBS	MYRICA CARIFERA: SOUTHERN WAX MYRTLE MYRICA HETEROPHYLLA: SOUTHERN BAYBERRY RHODODENDRON PRINOPHYLLUM: ROSE AZALEA RHODODENDRON VISCOSUM: SWAMP AZALEA

SPOTSYLVANIA SOLAR  
ENERGY CENTER C  
PREPARED FOR  
S-POWER

SHEET NUMBER  
EX-3-4

SUP 18-0003  
LANDSCAPE AND BUFFER  
AREA PLAN

KHA PROJECT  
116626000

DATE  
1/25/2019

SCALE AS SHOWN

DESIGNED BY JRB

DRAWN BY JRB

CHECKED BY SMM

APPROVAL

COMMONWEALTH OF VIRGINIA

SEAN MILLOT

Lic. No. 0402052332

1/25/2019

PROFESSIONAL ENGINEER

Kimley»Horn

© 2019 KIMLEY-HORN AND ASSOCIATES, INC.  
11400 COMMERCE PARK DR., SUITE 400  
RESTON, VA 20191  
PHONE: 703-674-1300  
WWW.KIMLEY-HORN.COM

S-POWER

An AES and AIMCo Company

2180 SOUTH 1300 EAST, SUITE 600  
SALT LAKE CITY, UT 84106  
PHONE: 801-679-3500 FAX: 801-679-3501  
WWW.SPOWER.COM