



# Tri-County/City Soil & Water Conservation District FY2020 Annual Report

to the Board of Supervisors of  
the County of Spotsylvania

*Presented by Marta Perry, Conservation District Manager  
April 2021*



# The Dust Bowl Origins of Soil & Water Conservation Districts



Tri-County/City SWCD was formed in 1944.

# Tri-County/City Soil & Water Conservation District

---

## Governed by 10-member Board of Directors

- 8 Publicly Elected Directors
  - 2 from Fredericksburg
  - 2 from King George
  - 2 from Spotsylvania → *Ms. Jan Massey, Mr. Wayne Miller*
  - 2 from Stafford
- 2 State-Appointed Directors
  - 1 At-Large → *Mr. Ray Simms*
  - 1 Virginia Cooperative Extension

## Small (but dedicated!) 4-person staff

- District Manager
- Agricultural Conservation Specialist
- Education Coordinator
- Administrative Professional



# What exactly do you do?

---

- Agricultural conservation programs
- Community conservation programs
- Education & outreach programs



# What exactly do you do?

---

- **Agricultural conservation programs**
- Community conservation programs
- Education & outreach programs







Fertilizer plans avoid waste & pollution.



Fencing livestock away from streams protects streambanks from erosion & keeps the water free of animal waste.



Cover crops prevent winter erosion.



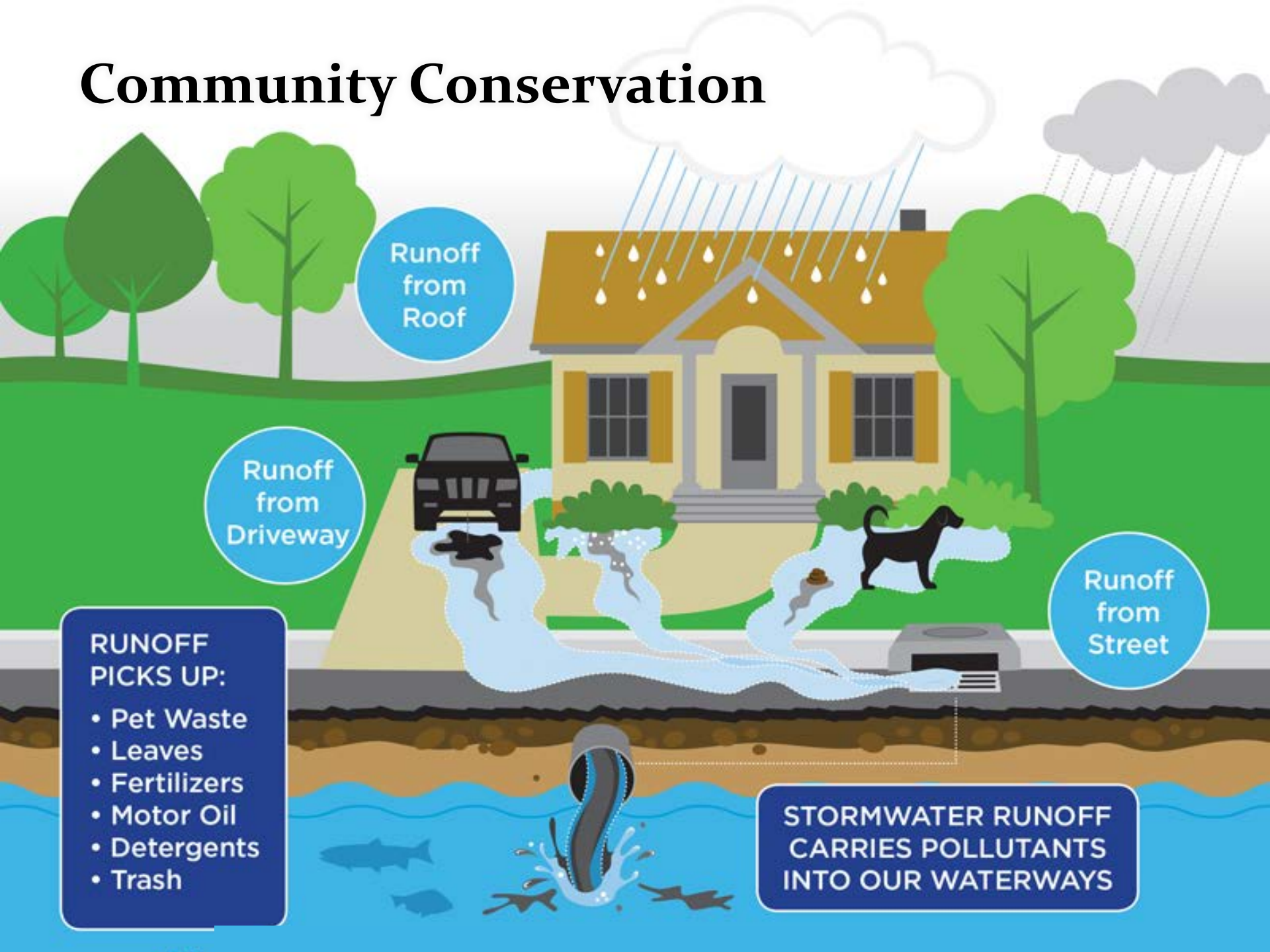
# What exactly do you do?

---

- Agricultural conservation programs
- **Community conservation programs**
- Education & outreach programs



# Community Conservation



Runoff  
from  
Roof

Runoff  
from  
Driveway

Runoff  
from  
Street

## RUNOFF PICKS UP:

- Pet Waste
- Leaves
- Fertilizers
- Motor Oil
- Detergents
- Trash

STORMWATER RUNOFF  
CARRIES POLLUTANTS  
INTO OUR WATERWAYS





Conservation Landscaping



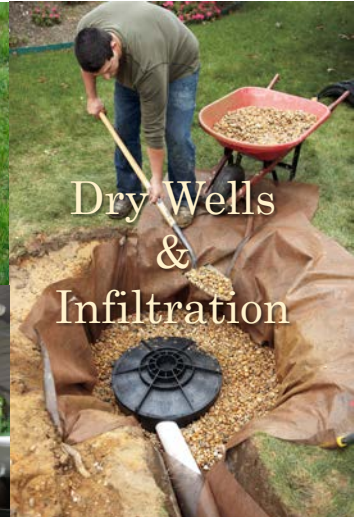
Virginia  
Conservation  
**VCAP**  
Assistance  
Program

Permeable Paving



Pervious  
Concrete/Asphalt

Grass Pavers



Dry Wells  
&  
Infiltration



Rainwater  
Harvesting  
Cisterns



Rain Gardens  
&  
Bioretention



Living Shorelines



Green Roofs



Constructed  
Wetlands



Stormwater Conveyances



04-24-2013 09:19



# What exactly do you do?

---

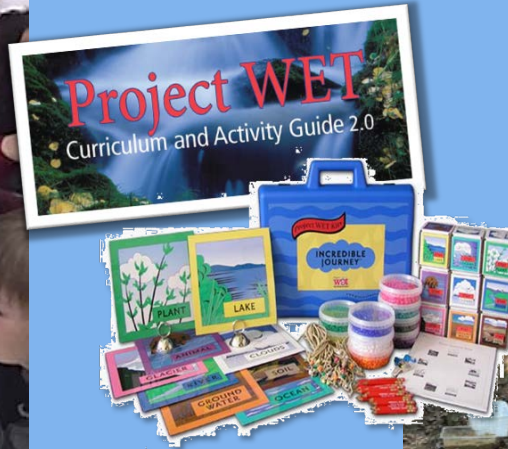
- Agricultural conservation programs
- Community conservation programs
- **Education & outreach programs**





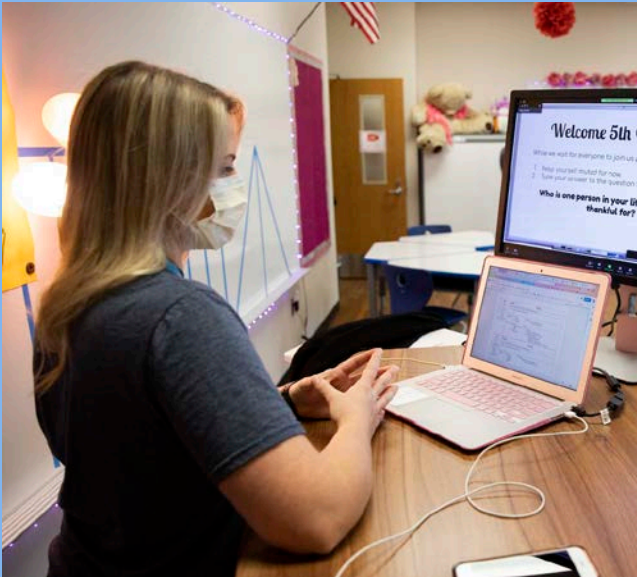


# K-12 SOL-Correlated Activities

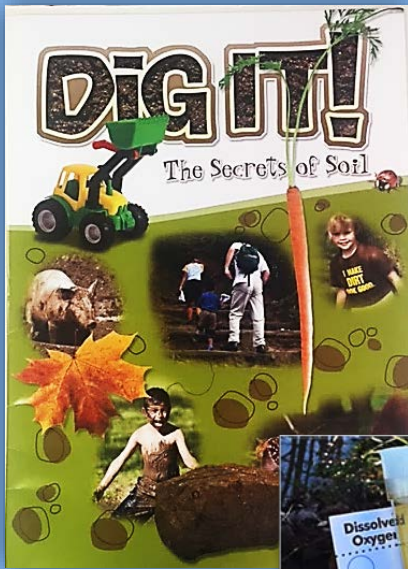


facebook

Tri - County / City Soil & Water Conservation District  
October 29, 2020  
Just finished our 1st of 3 virtual programs with Courtland High School! These amazing specimens were donated by a retired Board Member and Wildlife Scientist to make education more engaging!  
#BatWeek #EnvironmentalEducation







Books for all ages



Conservation Summer Camp Scholarships

Science equipment



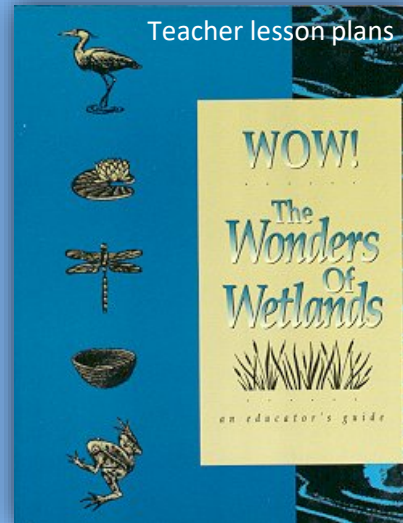
College Scholarships



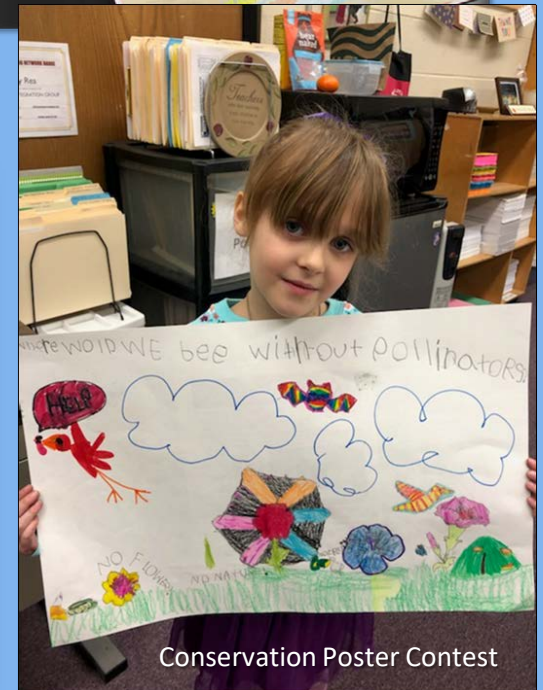
Maps & posters



The Enviroscope Model shows watershed pollution pathways.



Teacher lesson plans



Conservation Poster Contest



# Community Outreach



## NATIVE PLANTS FOR CENTRAL RAPPAHANNOCK VIRGINIA



**Tree Seedling & Rain Barrel Sale**  
**PRE-ORDERS ONLY THIS YEAR!**  
**Order Now!**

Trees benefit us and our environment by controlling erosion, reducing toxins, converting carbon dioxide to oxygen, and enhancing wildlife habitat. Proceeds are used for TCCSWCD conservation education programs.

**American Beautyberry** (*Callicarpa americana*)  
Grows to 3-6 ft. height. Loosely branched. Tiny lilac flowers in spring give way to vivid purple berries in the fall enjoyed by wildlife. Grows in moist to dry soils in full sun to part shade. Attracts butterflies and is deer resistant.

**Lilac** (*Syringa vulgaris*)  
Grows to 8-15 ft. height. Sweet-smelling flowers in spring. Prefers moist to dry, fertile, well-drained soils in full sun to light shade. Attracts butterflies and is deer resistant.

**Rain Barrel** – Collect and store rain water runoff from your rooftop via rain gutters. Great way to water your landscape and garden and save money. The rain barrels are made of recycled plastic bottles. Kit includes all hardware and directions. Also available year-round at Tri-County/City SWCD office.

**Fringetree** (*Chionanthus virginicus*)  
Grows to 12-20 ft. height. Creamy white blooms in May to June. Easily grown in moist to wet, well-drained soils in full sun to part shade. Attracts birds and is deer resistant.

**Eastern Redbud** (*Cercis canadensis*)  
"Red buds" in spring. Grows in moist, well-drained soil in full sun to part shade. Deer resistant.

**Hazelnut** (*Corylus americana*)  
Grows to 10-15 ft. height and 8-13 ft. width. Low maintenance. Grown in moist to dry, well-drained soil in part shade. Produces excellent nuts. Not deer resistant.

**Flowering Dogwood** (*Cornus florida*)  
Grows to 15-30 ft. height. Prefers moist, well-drained soils and full or part sun. Useful for wildlife habitat, slope stabilization, and as an ornamental. Deer resistant.

**American Elderberry** (*Sambucus canadensis*)  
Grows to 5-12 ft. height. Prefers moist, well-drained soils in full sun. White blooms with Not deer-resistant. Attracts birds and butterflies.

**Directions:** Fill out form, Check LOCATION you will pick up your seedlings. Pre-payment preferred. Fax: (540) 656-2403, Mail: TCCSWCD, 4811 Carr Drive, Fredericksburg VA 22408, Email: [tricitycity@tccswcd.org](mailto:tricitycity@tccswcd.org), or Phone: (540) 656-2401 by November 1st 2017.

**I WILL PICK UP MY SEEDLINGS HERE:**

☐ Tri-County/City SWCD Office  
4811 Carr Drive  
Fredericksburg, VA 22408

☐ Fredericksburg Farmers Market  
Hurkamp Park  
George & Prince Edward Street

NAME \_\_\_\_\_  
COUNTY/CITY \_\_\_\_\_  
EMAIL\* \_\_\_\_\_

PHONE \_\_\_\_\_

HOW DID YOU HEAR ABOUT SALE?  
\*Email reminders will be sent in the spring.

SEEDLING SPECIES	SIZE	N/PACK	S/PACK	# PACKS(S)	TOTAL
Fringetree	14-22"	2	\$4		\$
Eastern Redbud	12-20"	2	\$4		\$
American Beautyberry	18-22"	2	\$4		\$
Flowering Dogwood	12-22"	2	\$4		\$

SEEDLING SPECIES	SIZE	N/PACK	S/PACK	# PACKS(S)	TOTAL
Hazelnut	18-24"	2	\$4		\$
Elderberry	12"	2	\$4		\$
Lilac	12"	2	\$4		\$
Rain Barrel	50 gal	1	\$75		\$

**Cash or check only, debit cards.**  
**TOTAL AMOUNT DUE** \$





**Thank you,  
Spotsylvania County.**

***OUR VALUED PARTNER IN CONSERVATION  
SINCE 1944***





## **PHOTO CREDITS** (for non-TCCSWCD or non-public domain images)

### **ORIGINS**

- Dustbowl: <http://www.pbs.org/wgbh/americanexperience/films/dustbowl/>
- FDR & farmer: <https://www.history.com/topics/dust-bowl/videos/fdrs-fireside-chat-on-the-drought-and-the-dust-bowl>
- Men reviewing field: [http://www.fauquiemow.com/images/uploads/news/JMSWCD\\_50\\_Airline\\_site.jpg](http://www.fauquiemow.com/images/uploads/news/JMSWCD_50_Airline_site.jpg)
- Put your District on the map: [https://i2.wp.com/conservationdistrict.org/wp-content/uploads/Put\\_your\\_CD\\_on\\_map-NRCS.jpg](https://i2.wp.com/conservationdistrict.org/wp-content/uploads/Put_your_CD_on_map-NRCS.jpg)

### **AGRICULTURAL CONSERVATION**

- Field runoff: [https://upload.wikimedia.org/wikipedia/commons/3/3b/Sediment\\_runoff\\_NRCS\\_2016a.jpg](https://upload.wikimedia.org/wikipedia/commons/3/3b/Sediment_runoff_NRCS_2016a.jpg)
- Cows in stream: [https://knoxcounty.org/epw/images/soil/stream\\_access\\_before.jpg](https://knoxcounty.org/epw/images/soil/stream_access_before.jpg)
- Dead fish: Jennifer Graham, USGS - [https://prd-wret.s3-us-west-2.amazonaws.com/assets/palladium/production/s3fspublic/styles/full\\_width/public/thumbnails/image/binder\\_lake\\_iowa\\_7\\_l.jpg?itok=vrh09OU1](https://prd-wret.s3-us-west-2.amazonaws.com/assets/palladium/production/s3fspublic/styles/full_width/public/thumbnails/image/binder_lake_iowa_7_l.jpg?itok=vrh09OU1)

### **COMMUNITY CONSERVATION**

- Community Conservation graphic: [www.rvah2o.org/storm-water/](http://www.rvah2o.org/storm-water/)

### **VCAP**

- Meadow: <https://bloximages.chicago2.vip.townnews.com/fredericksburg.com/content/tncms/assets/v3/editorial/f/3b/f3bb3546-fe02-5be6-bc21d2a52e27615/5463b92043319.image.jpg>
- Residential conservation landscaping: Shirley Street Land Design, Prince William
- Dry well: Ryan Benyi, <https://www.thisoldhouse.com/how-to/how-to-install-dry-well>

### **VCAP, continued**

- Cistern: Bryan Hofmann, Friends of the Rappahannock
- Step-pools: <https://mygreenmontgomery.org/wp-content/uploads/2016/02/Dennis-Avenue-step-pools.jpg>
- Check dams: A grass swale with check dams. Photo courtesy Stormwater Maintenance and Consulting, LLC. [http://chesapeakestormwater.net/wpcontent/uploads/2014/07/swale\\_checkdam.jpg](http://chesapeakestormwater.net/wpcontent/uploads/2014/07/swale_checkdam.jpg)
- Green roof: <https://bloximages.chicago2.vip.townnews.com/fredericksburg.com/content/tncms/assets/v3/editorial/6/c0/6c03a030-1d0a-559d-8f57-54395d050a12/551dba37efb3a.image.jpg>
- Living shoreline: © Tracy Skrabal, [https://www.southernenvironment.org/uploads/cases/\\_1140x550/living-shorelines-casepage.jpg](https://www.southernenvironment.org/uploads/cases/_1140x550/living-shorelines-casepage.jpg)

### **CONSERVATION EDUCATION**

- Dig It!: Smithsonian & National Association of Conservation Districts
- Conservation Habits - Healthy Habits: National Association of Conservation Districts
- Virginia Soils poster: USDA-NRCS
- Chesapeake: Exploring the Water Trail of Captain John Smith: John Page Williams
- WOW! The Wonders of the Wetlands: Environmental Concern, Inc.
- EnviroScape interactive watershed model: EnviroScape, Inc.
- Project WET curriculum: Project WET Foundation

### **COMMUNITY OUTREACH**

- "Plant Central Rapp Natives" campaign logo: Virginia Witmer, DEQ



Contact:

Marta Perry, District Manager / (540) 656-2401 / [marta.perry@tccswcd.org](mailto:marta.perry@tccswcd.org)