

SPOTSYLVANIA COUNTY THOROUGHFARE PLAN

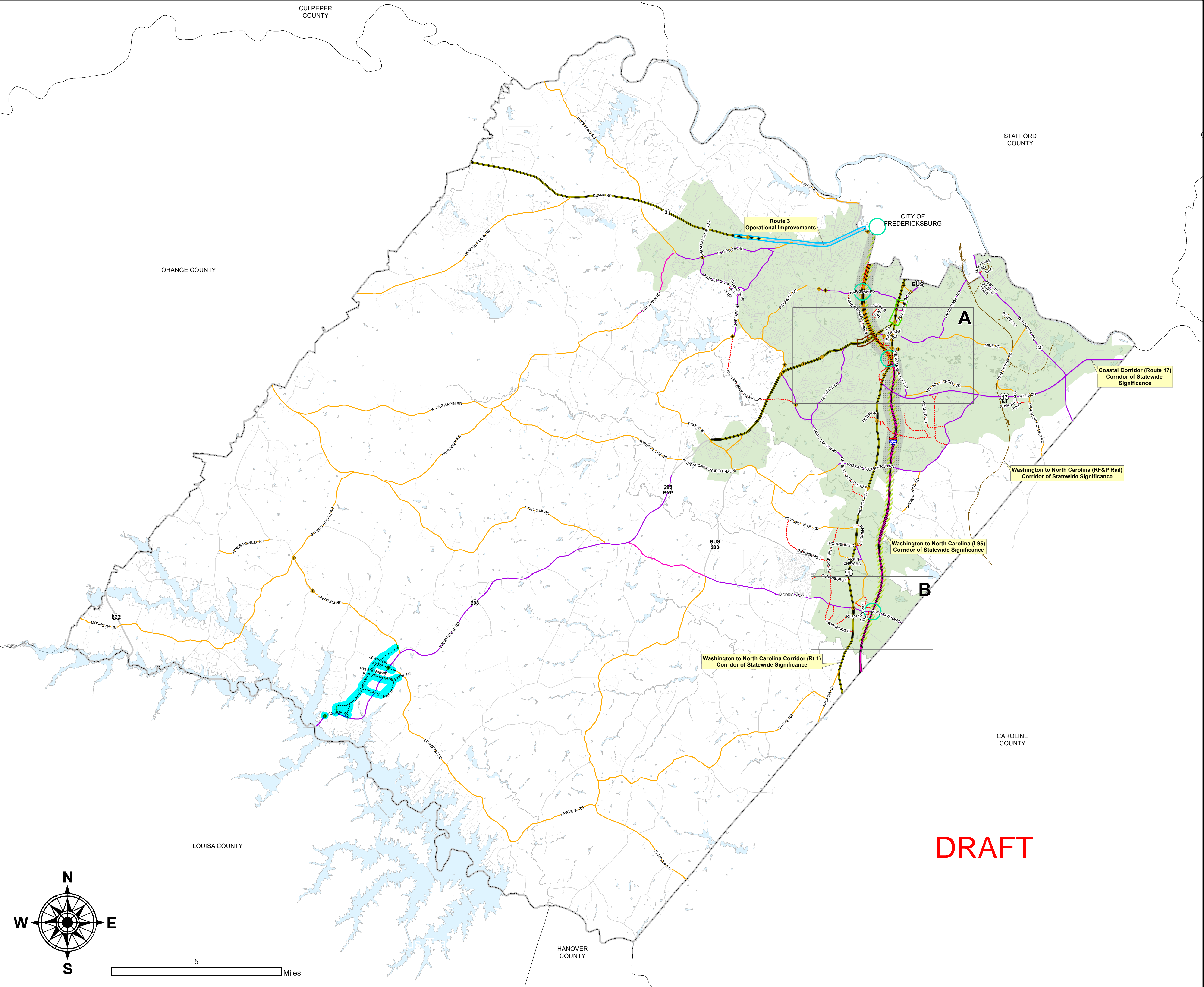
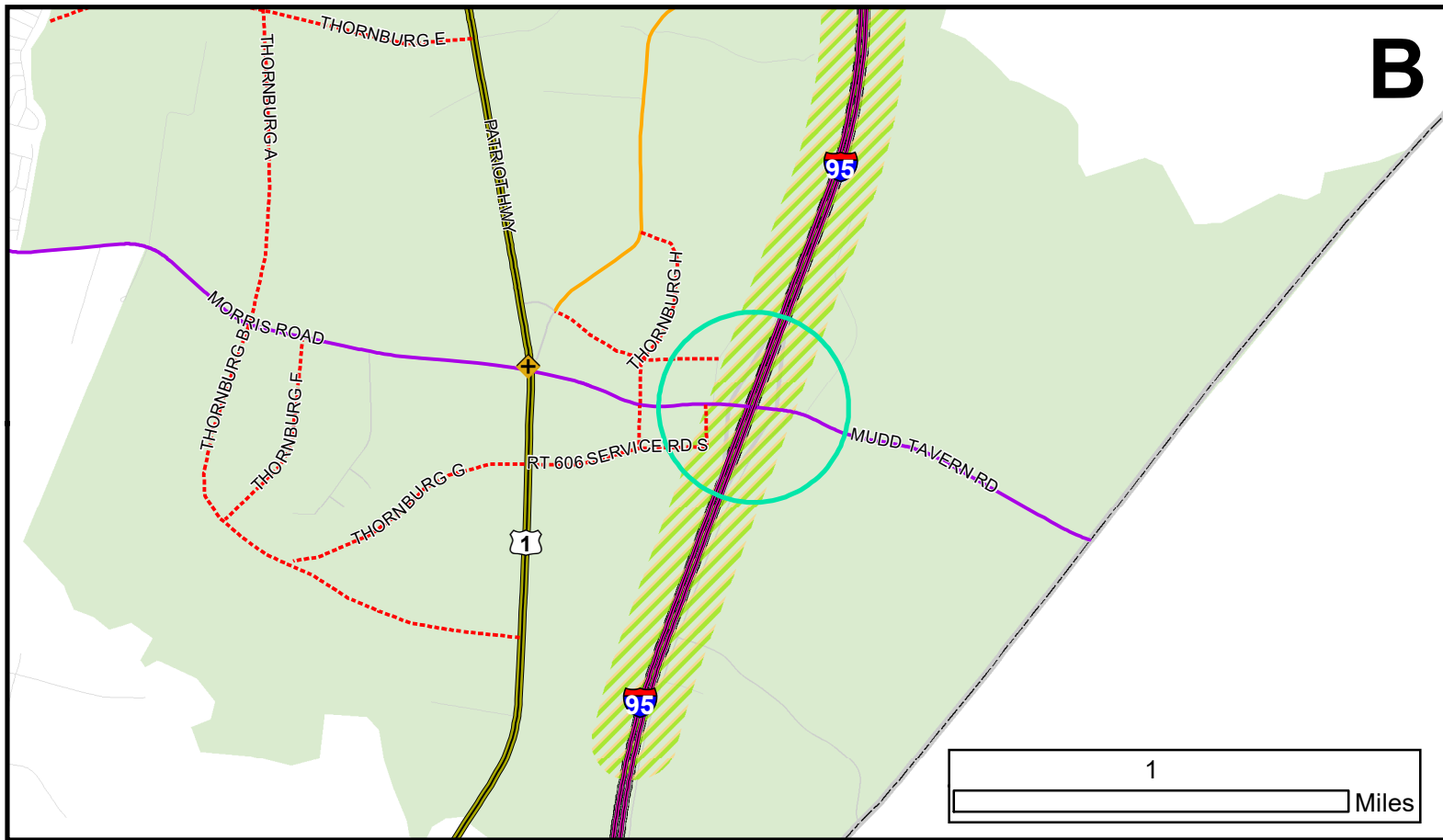
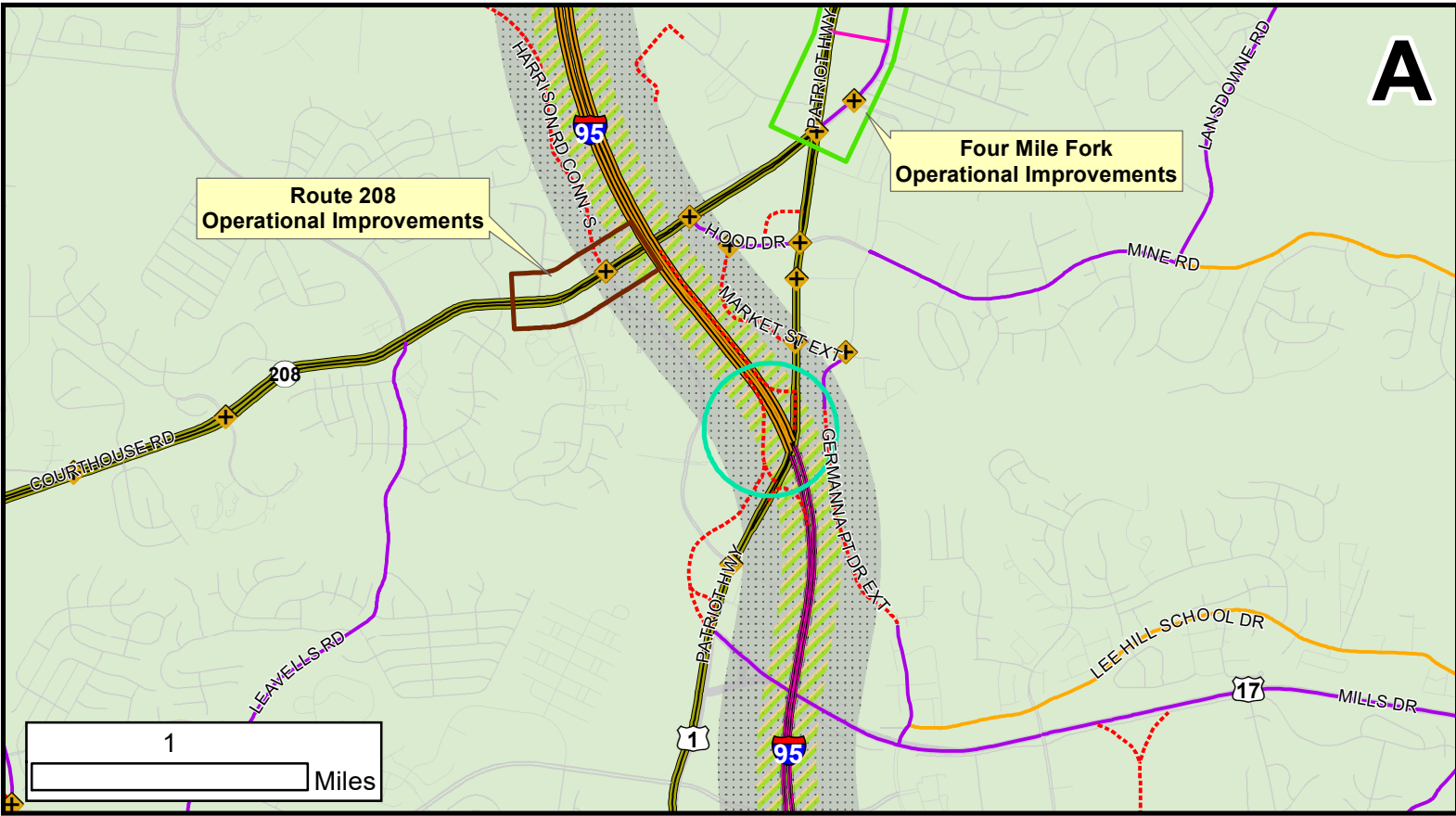
Map Approved: DRAFT

Legend

- VRE Station (Rail)
- ◆ Intersection Improvement
- Four Mile Fork Operational Improvements
- Rt 208 Operational Improvements
- Rt 3 Operational Improvements
- Interchange Project
- 2-Lane Improvement
- 3-Lane Improvement
- 4-Lane Improvement (Divided)
- 6-Lane Improvement (Divided)
- 8-Lane Improvement (Divided)
- Interstate Lane Additions
- Interstate 95
- New Concept Facility*
- Rail Corridor
- 195 Corridor ITS
- 195 Interchange Study Area**
- Primary Development Boundary

* New Concept Facilities are depicted as conceptual alignments only. Further design/engineering necessary to determine precise route.

** 195 Interchange Studies to include feasibility of Collector-distributor (CD) Lanes in both directions between Exit 130 and new access points (Harrison Road (620) & Courthouse Road (208) and include North Bound CD lanes between Route 3 and US 17 (NB) Rappahannock River Crossing project). A potential new interchange south of Exit 126 and additional Exit 126 improvements including to the Interstate Ramp. Alternative 3 (Improvements to US 1 and Southpoint Parkway), Exit 126 to US 1 ramp and signal improvements or other recommendations from the KH Interchange Modification Report and companion Planning Study.



DRAFT