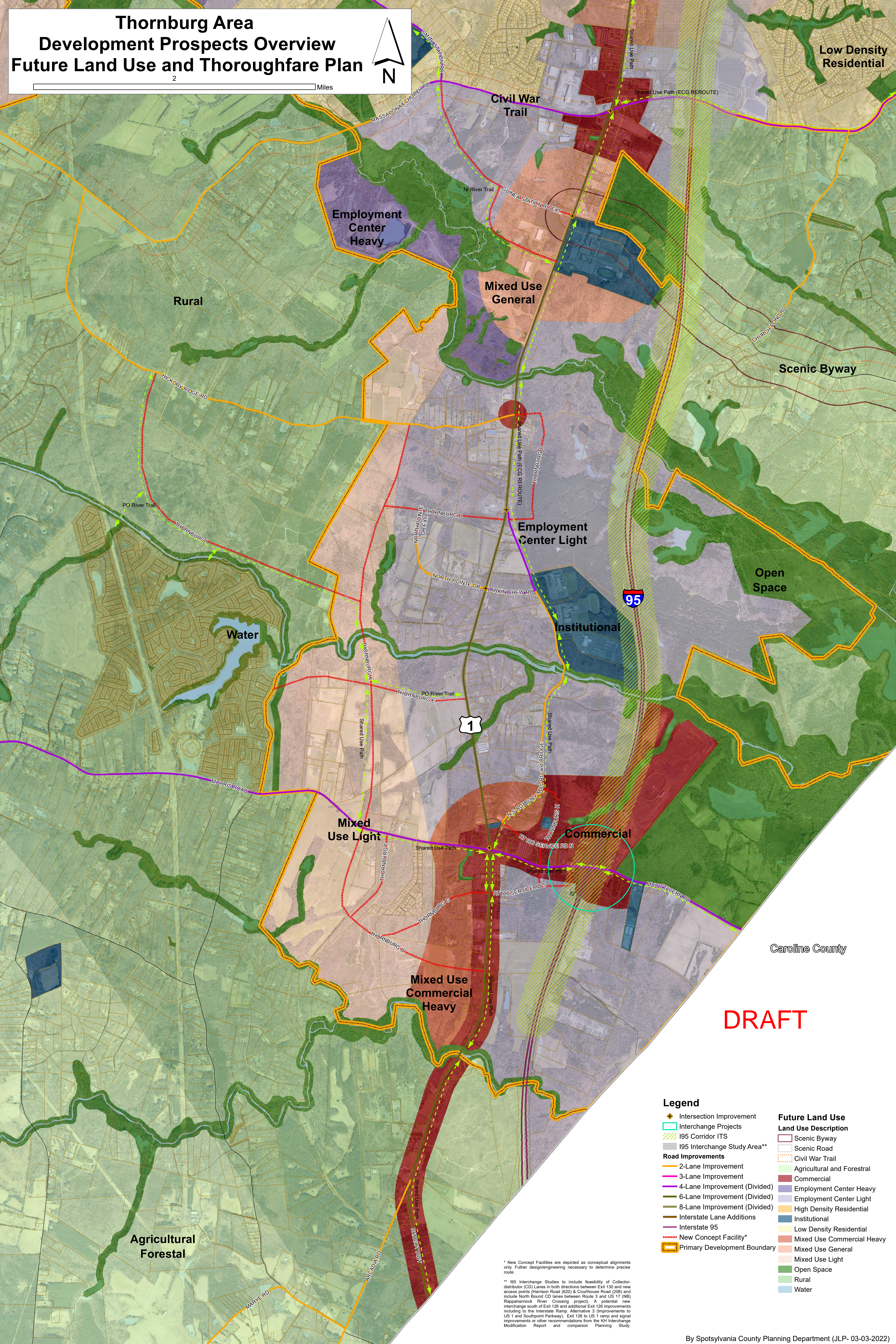


Thornburg Area  
Development Prospects Overview  
Future Land Use and Thoroughfare Plan

2

Miles

N



\* New Concept Facilities are depicted as conceptual alignments only. Further design/engineering necessary to determine precise route.

\*\* 195 Interchange Studies to include feasibility of Collector-distributor (CD) Lanes in both directions between Exit 130 and new access points (Harrison Road (620) & Courthouse Road (208) and include North Bound CD lanes between Route 3 and US 17 (NB) Rappahannock River Crossing project). A potential new interchange south of Exit 126 and additional Exit 126 improvements including to the Interstate Ramp, Alternative 3 (Improvements to US 1 and Southpoint Parkway), Exit 126 to US 1 ramp and signal improvements or other recommendations from the KHI Interchange Modification Report and companion Planning Study.